



REThERM GRE106C

Regeneration oven
to reheat refrigerated
food (+3°C)

CONSTRUCTION FEATURES

- Tightness chamber with radiused corners
- Total thermic insulation with rock or glass wool
- Long lasting front seals made up of food grade of high heat resistance
- Removable side racks to facilitate cleaning
- Internal drain for easy cleaning
- Ventilated heating provided by high efficiency protected heating elements
- Snap-shut door
- Adjustable feet
- Easy access to facilitate maintenance and repair
- Double low-emission glass door with internal ventilation
- Condensation drip tray under the door and connected to the oven drainage system.

FUNCTIONAL FEATURES

- Electromechanical controls: main switch, lights switch, timer, moisture, temperature
- Simplified, user-friendly controls
- Periodic reversal of direction of rotation of the fan for better air distribution
- Automatic stopping of fans when the door is opened
- End-of-cycle buzzer
- Chamber with safety thermostat
- Operating temperature 30°C ÷ 160°C
- Glazed door plus lighting
- Removable GN1/1 tray racks

OPTIONS & ACCESSORIES

- ☐ Supports
- ☐ Openable inside glass of the door
- ☐ Water filter system
- ☐ Grids
- ☐ Trays
- ☐ Opposite side opening
- ☐ Door lock with key

moduline

TECHNICAL INSTALLATION DIAGRAM

Electricity supply
cable inlet



Vent for excess
humidity



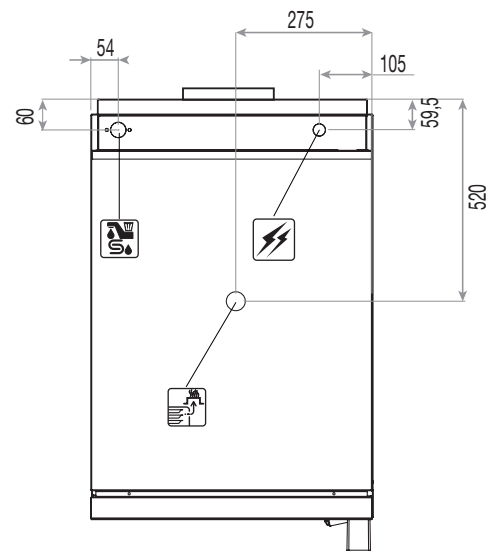
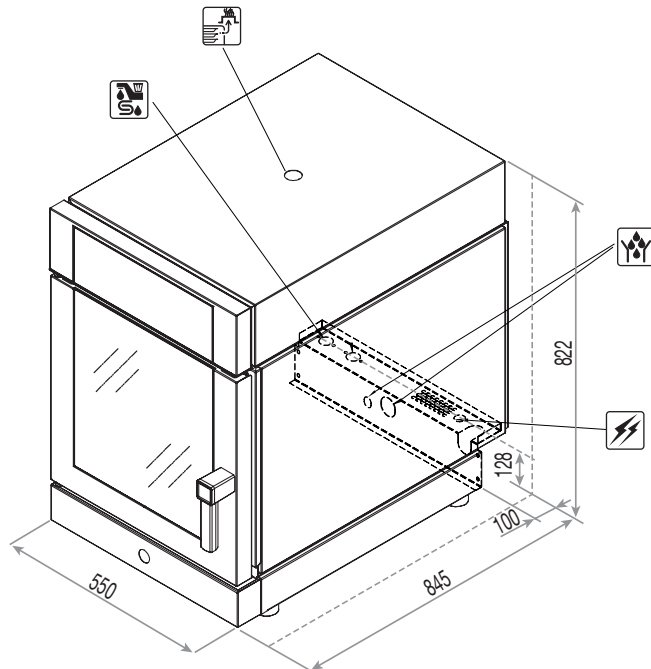
Chamber drain



Softened
water inlet



Important - Drawing and
dimensions refer to the
standard version.
They may change with the
addition of accessories or
options.



Overall dimensions
(W x D x H) - mm

550 x 845 x 822 h

Trays capacity

6 x GN 1/1

Plates capacity

12 Ø 200-260
6 Ø 270-320

Distance
[mm]

64

Power supply

AC 220-240V 50/60Hz

**Working
temperature [°C]**

30 ÷ 160

**Product max
capacity [Kg]**

15

Total input
[kW]

3,45 (230V)

Amps.
[A]

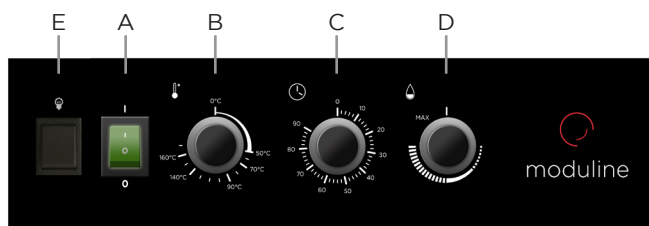
15 (230V)

Water pressure
[kPa]

150 ÷ 500

Net weight
[Kg]

90



- A ON/OFF switch
- B Cavity temperature knob
- C Time setting knob
- D Cavity humidity control knob
- E Chamber light button

MODULINESRL

Via dell'Industria 11, Z.I. San Giacomo di Veglia 31029 Vittorio Veneto (TV) - ITALY
tel. +39 0438 5063 - fax +39 0438 912 323 - info@moduline.it - www.moduline.it