



# HOLD HSW212E

Warm holding drawers with separate controls

## CONSTRUCTION FEATURES

- 2 Water Tight cavities with radiused corners
- Total thermic insulation with rock or glass wool
- Long lasting drawers seals made up of food grade of high heat resistance
- Static heating provided by low consumption wire heating element that coils up all the chamber
- Ergonomic and fully built-in drawers handle with magnetic closure

## FUNCTIONAL FEATURES

- Two electronic control of the temperature
- Operating temperature 30° ÷ 120°C
- Adjustable moisture vent on the drawer
- Safety thermostats on each cavity
- Manual keyboard lock

## STANDARD SUPPLY

- Removable GN1/1 tray racks
- Adjustable feet

## OPTIONS & ACCESSORIES

- Set wheels
- Grids
- Trays
- UK plug

### MODULINESRL



moduline

TECHNICAL  
INSTALLATION  
DIAGRAM

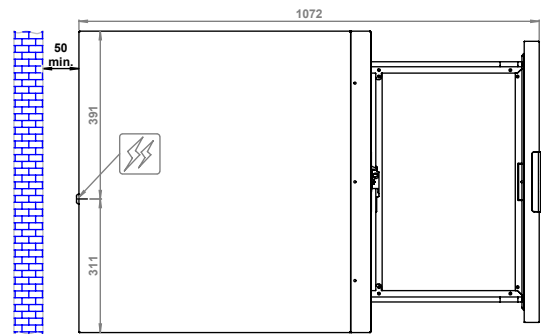
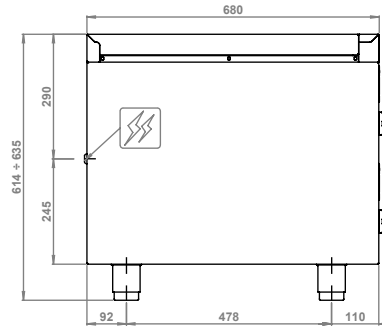
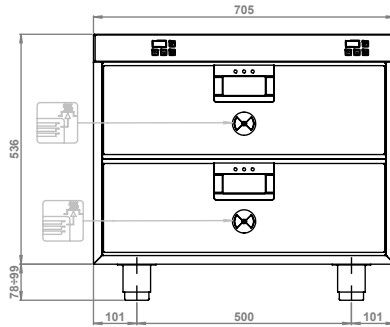
Electricity supply  
cable inlet



Humidity exhaustion  
vent



**Important** - Drawing and  
dimensions refer to the  
standard version.  
They may change with the  
addition of accessories or  
options.



Overall dimensions (W x D x H) - mm	705 x 680 x 614+635h	Trays capacity	2 GN 1/1
Power supply	AC 220-240V 50/60Hz	Containers max height [mm]	150
Total input [kW]	1,4 (230V)	Product max capacity [Kg]	12
Amps. [A]	6,1 (230V)	Net weight [Kg]	67
Working temperature [°C]	30 ÷ 120		



- A Display
- B ON/OFF switch
- C Temperature decrease key
- D Temperature increase key
- E START/STOP key

MODULINESRL

Via dell'Industria 11, Z.I. San Giacomo di Veglia 31029 Vittorio Veneto (TV) - ITALY  
tel. +39 0438 5063 - fax +39 0438 912 323 - info@moduline.it - www.moduline.it